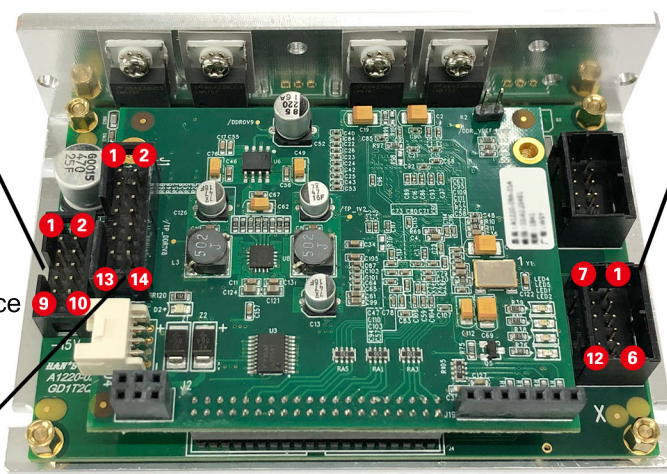
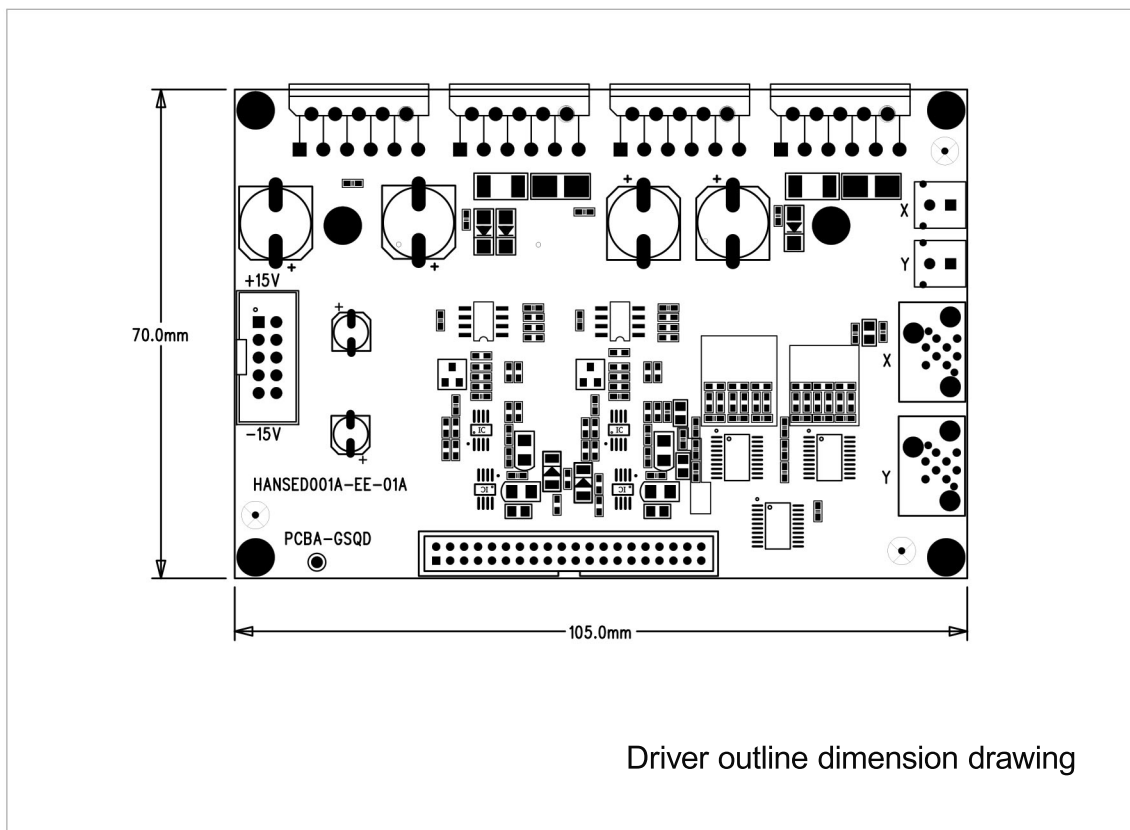


# Digital UltraGalvo Driver Board



**J5: Power interface**  
 Pin2, 3, 4: +15VIN  
 Pin8, 9, 10: -15VIN  
 Pin5, 6, 7: GND

**J1: Marking signal interface**  
 Pin1: CLK-  
 Pin2: CLK+  
 Pin3: SYNC-  
 Pin4: SYNC+  
 Pin5: XCHANNEL-  
 Pin6: XCHANNEL+  
 Pin7: YCHANNEL-  
 Pin8: YCHANNEL+  
 Pin9, 11, 13: FB(1-3)-  
 Pin10, 12, 14: FB(1-3)+

**J2: Galvo signal control port**  
 Pin1: MOTOR1+  
 Pin2: -15V  
 Pin3, 4, 5, 9: GND  
 Pin6: M1\_T+ (Preheating circuit control end)  
 Pin7: MOTOR1- (dangling)  
 Pin8: HEATER1 (Preheating circuit detection end)  
 Pin10: LED\_AGC (Photocell voltage detection terminal)  
 Pin11: POS1\_IN-  
 Pin12: POS1\_IN+

深圳市大族思特科技有限公司  
 Shenzhen Han's Scanner S&T Co., Ltd.

+86-(0)755-23041055

www.hansscanner.com

hansscanner@hanslaser.com

深圳市宝安区福永镇重庆路128号大族激光4栋4楼

4F, Building 4, Han's Laser Production Base, No. 128, Chongqing Road, Fuyong Street, Baoan District, Shenzhen City, Guangdong, P.R. China.



**HAN'S SCANNER**  
 大族思特

